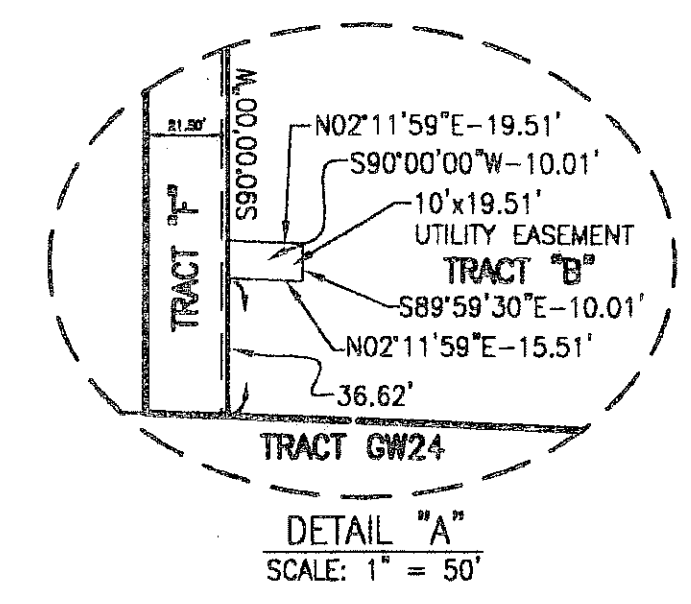


TRACT RN3R AT ABACOA - REPLAT

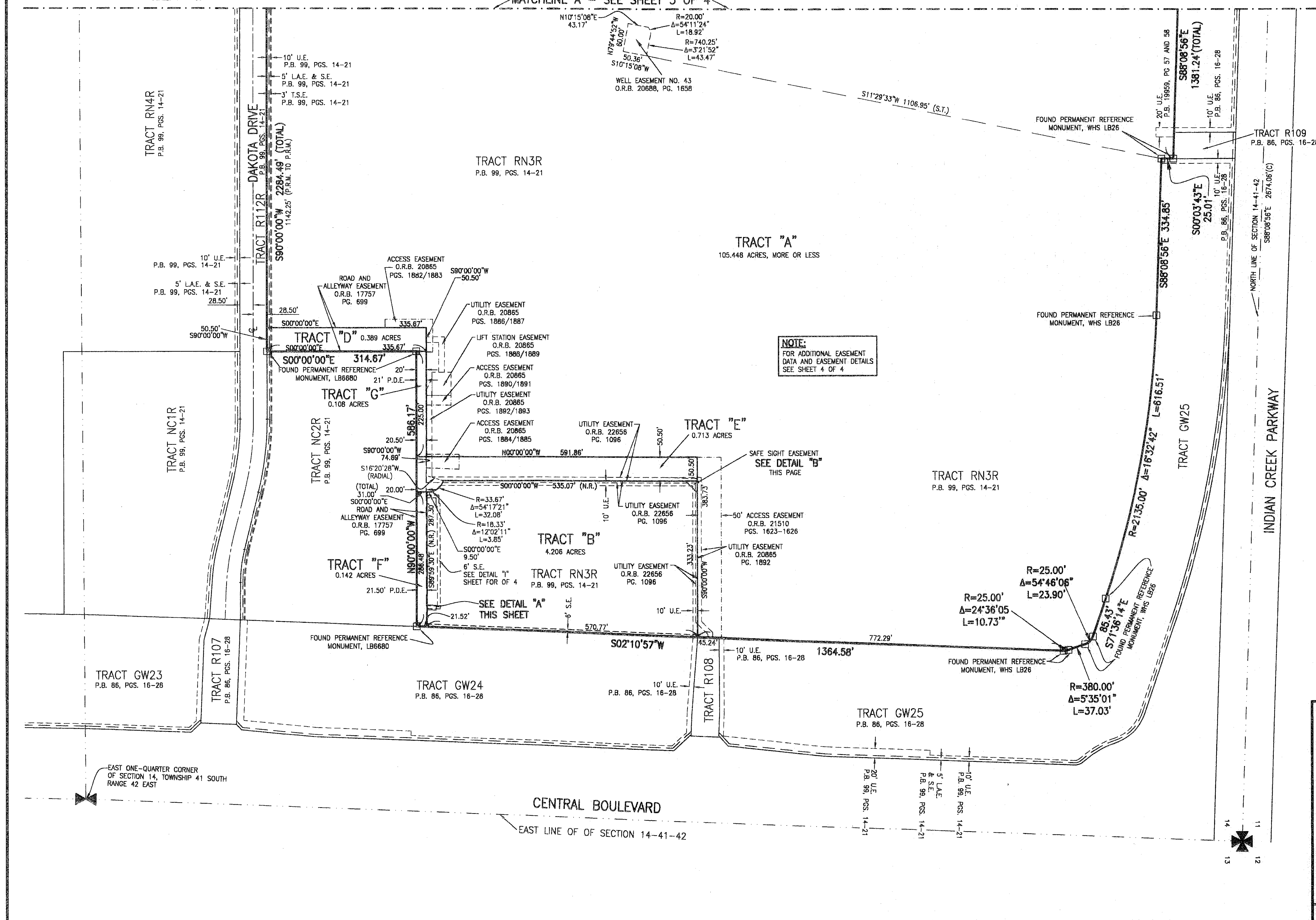
BEING A REPLAT OF TRACT RN3R ACCORDING TO AT ABACOA - PLAT NO. 4 REPLAT AS RECORDED IN PLAT BOOK 99, PAGES - 14 THROUGH 21 OF THE PUBLIC RECORDS OF PALM BEACH COUNTY, FLORIDA, LYING IN SECTION 14, TOWNSHIP 41 SOUTH, RANGE 42 EAST, TOWN OF JUPITER, PALM BEACH COUNTY, FLORIDA
 SHEET 2 OF 4 JANUARY, 2009

THIS INSTRUMENT PREPARED BY
 WILBUR F. DIMNE, P.S.M. 4190, STATE OF FLORIDA
 ARCADIS U.S., INC.
 ENGINEERS PLANNERS SURVEYORS
 2081 VISTA PARKWAY
 WEST PALM BEACH, FLORIDA 33411
 LB7062 / EB7917

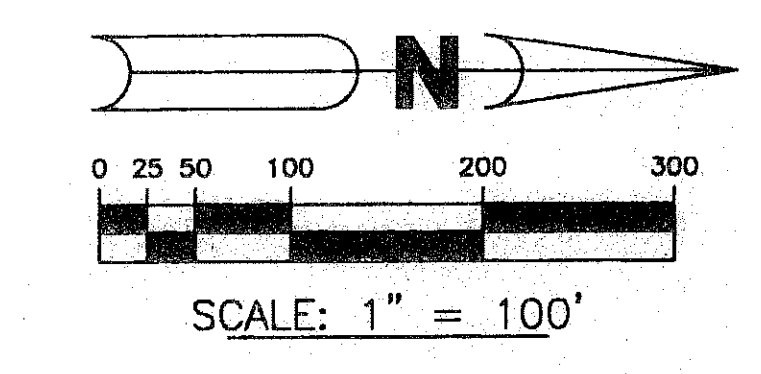
117



MATCHLINE A - SEE SHEET 3 OF 4



NOTE:
 FOR ADDITIONAL EASEMENT DATA AND EASEMENT DETAILS SEE SHEET 4 OF 4



- LEGEND:**
- - FOUND PERMANENT REFERENCE MONUMENT, AS NOTED WILLIAM, HATFIELD & STONER, INC.
 - - SET PERMANENT REFERENCE MONUMENT, L.B. #7062
 - Δ - DELTA ANGLE
 - ∠ - ARC LENGTH
 - R - RADIUS
 - CB - CHORD BEARING
 - CH - CHORD DISTANCE
 - CL - CENTERLINE
 - L.A.E. - LIMITED ACCESS EASEMENT
 - T.S.E. - TEMPORARY SIDEWALK EASEMENT
 - S.E. - SIDEWALK EASEMENT
 - N.R. - NOT RADIAL
 - N.T.S. - NOT TO SCALE
 - O.R.B. - OFFICIAL RECORD BOOK
 - P.B. - PLAT BOOK
 - PGS. - PAGES
 - P.S.M. - PROFESSIONAL SURVEYOR AND MAPPER
 - N.R. - NON-RADIAL
 - RAD. - RADIAL
 - R/W - RIGHT-OF-WAY
 - U.E. - UTILITY EASEMENT
 - S.T. - SURVEY TIE
 - P.S.E. - PUBLIC SIDEWALK EASEMENT

